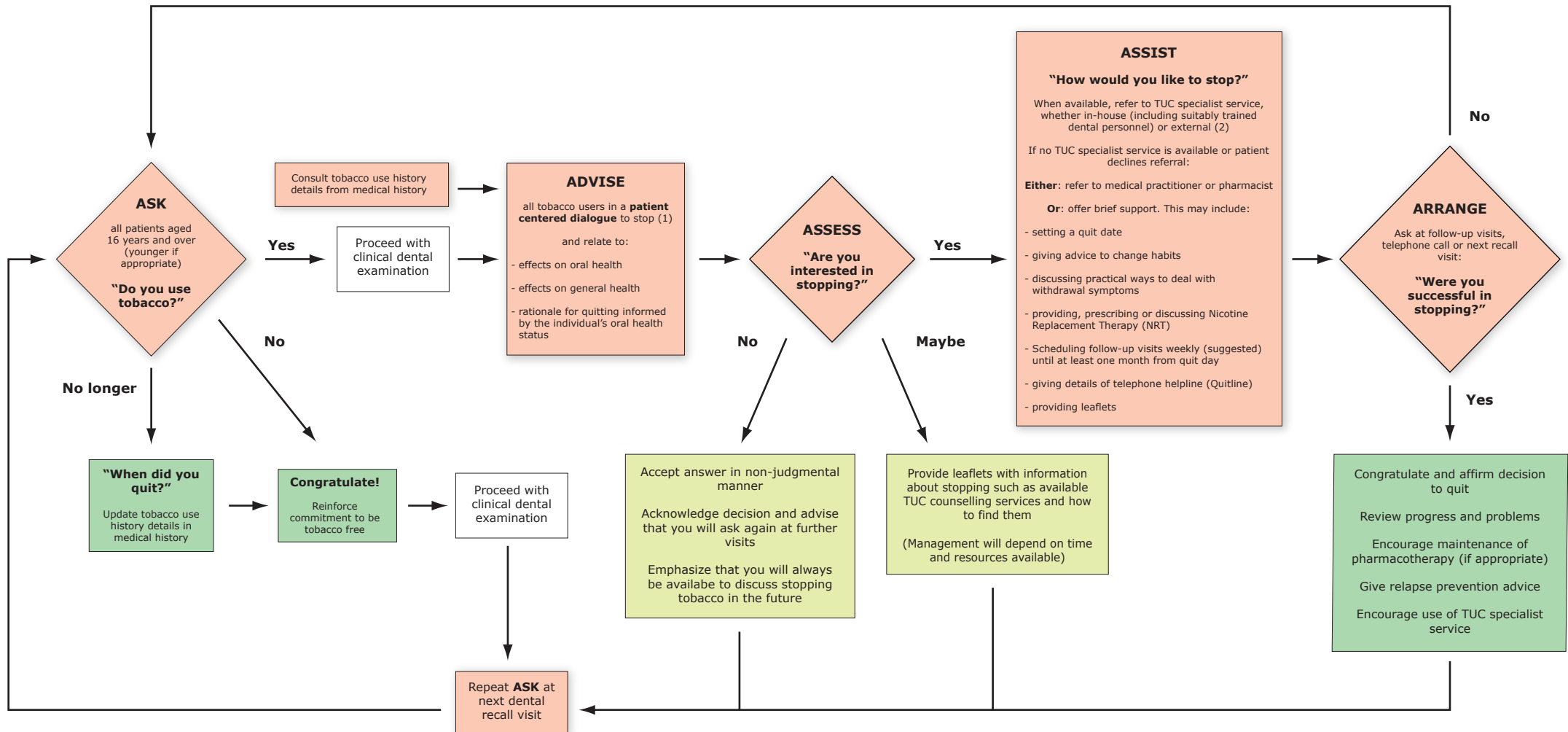


Tobacco Use Cessation (TUC) care pathway for dental practice



Rationale

- (1) West, R., A. McNeill, et al. (2000). Smoking cessation guidelines for health professionals: An update. *Thorax* 55: 987-999.
- (2) Sutherland G. Evidence for counselling effectiveness for smoking cessation. *J Clin Psych Monograph* 2003; 18: 22-34.